

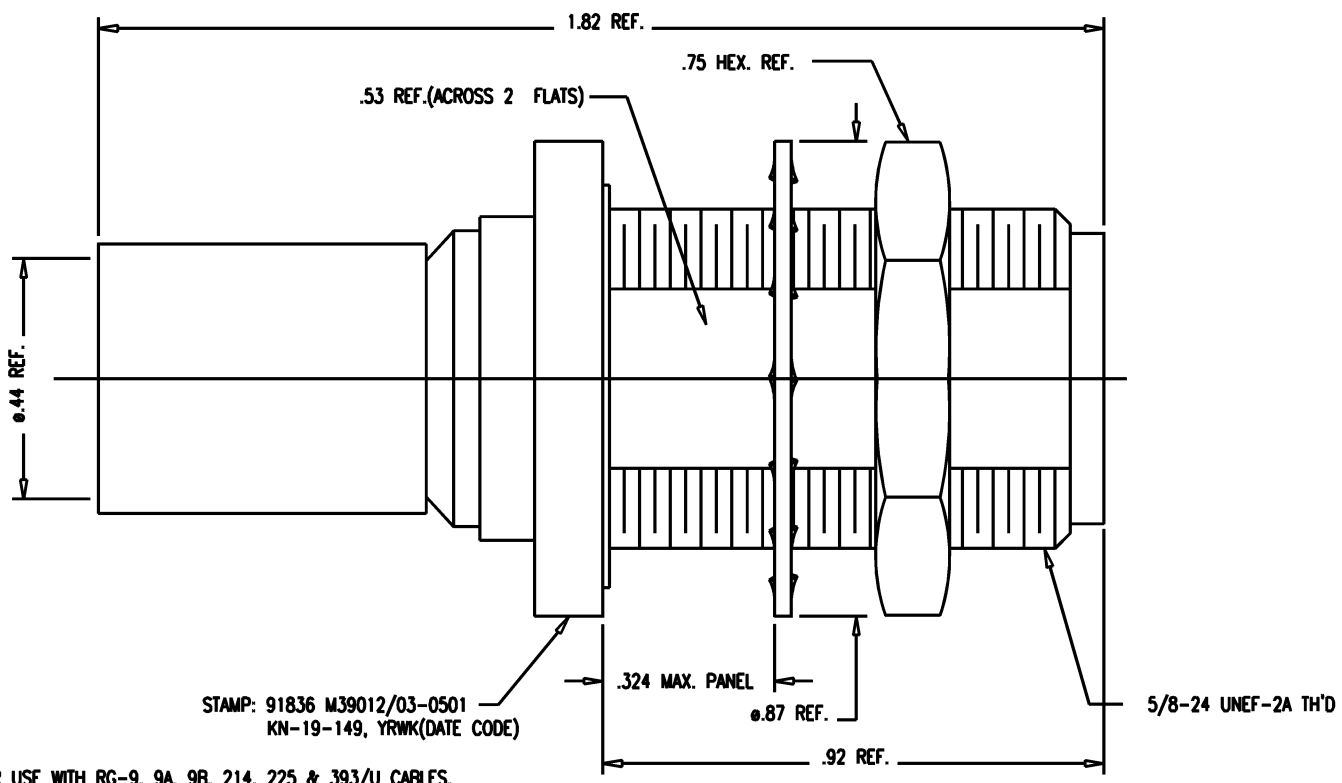
DASH NO.	M CODE	MADE FROM
----------	--------	-----------

SD

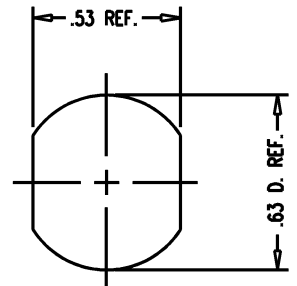
M39012/03-0501

REVISIONS

ISSUE	CHANGES
6	CN 33220 C WJM 08/20/91
7	CN 37427 E JW 03/19/98
8	CN 38046 E DCT 7/10/00
9	CN 38496 E BDH 02/05/02



- NOTES:
- FOR USE WITH RG-9, 9A, 9B, 214, 225 & 393/U CABLES.
 - FOR CABLE TRIMMING SEE KTU-137 & KTD-138.
 - FOR FORMING USE CRIMP DIE KTH-2004.
 - FOR CABLING INSTRUCTIONS SEE CP-480.
 - MATERIALS:
 - INSULATOR: TEFLON, ASTM-D-4894
 - LOCKWASHER: PHOS. BRONZE, ASTM-B-103
 - CENTER CONTAC: BER. COP., ASTM-B-196
 - K-GRIP SLEEVE: COM. BRONZE, ASTM-B-140
 - GASKET: SILICONE RUBBER, ZZ-R-765
 - ALL OTHER METAL PARTS: BRASS, ASTM-B16
 - FINISHES:
 - CENTER CONTACT-GOLD PLATE PER MIL-G-45204
 - ALL OTHER METAL PARTS-SILVER PLATE PER QQ-S-365
 - ELECTRICAL CHARACTERISTICS:
 - NOMINAL IMPEDANCE-50 OHMS
 - FREQUENCY RANGE-DC TO 11 GHZ
 - WORKING VOLTAGE-1000 VRMS



MOUNTING HOLE

KN191497

SCALE 4:1

APPROX SURFACE AREA

KN-19-149

USED ON

REF:

JACK, BULKHEAD, N

DRAWN GINO DATE 04/30/74

DESIGN LI DATE 08/02/74

APPR. DATE

KINGS
ELECTRONICS CO., INC.
ROCK HILL, SOUTH CAROLINA 29730

SD

M39012/03-0501